



EDX Software Training Seminars

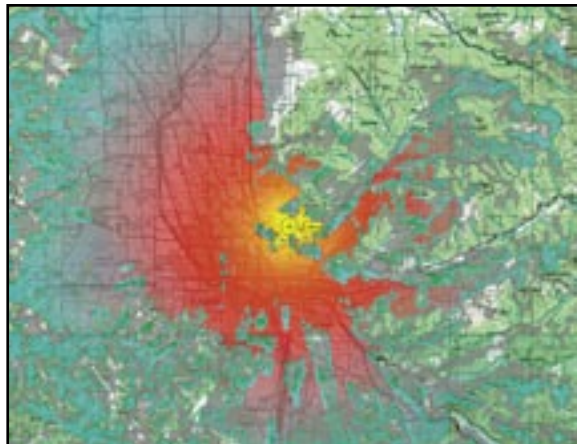
Learn to use your EDX software effectively and efficiently by attending an EDX training seminar. This two-day session covers EDX® SignalPro® and SIGNAL™. The session offers training on basic software use as well as valuable tips and insights to help with specific industry requirements.

Training Seminars

2008 Dates

January	16th and 17th
April	16th and 17th
August	6th and 7th
October	22nd and 23rd

Seminars are held at the EDX headquarters in Eugene, Oregon. Courses start at 9:00am and run until 5:00pm with a 1 hour lunch break.



Day One

- Introduction
- Propagation modeling and methods
- Map projections and terrain/building database use
- Overview of program(s)
- Point-to-point link analysis
- Mapping and display
- Area studies
- Signal strength methods
- C/I ratio
- MLS
- BER
- Multi-point
- Remote to base

Day Two

- Review of day one
- Point and route studies
- Printing and plotting
- Demographic and measurement data studies
- Antenna analysis/directional antenna pattern and use
- Utility functions
- Study process time optimization
- Case studies
- Open-ended topics and discussion

EDX training seminars are led by EDX's Support Services Team and emphasize the GUI functions that customers use most often. Although training is not required to use EDX's intuitive GUI, attendees will learn to maximize the features of EDX software so that they can effectively and efficiently get the most value from this engineering tool investment.

Enrollment is limited –so book early!

EDX reserves the right to cancel or reschedule a training seminar two weeks prior to the session.

For more information on training, call the EDX Customer Relations Team or e-mail us at info@edx.com.

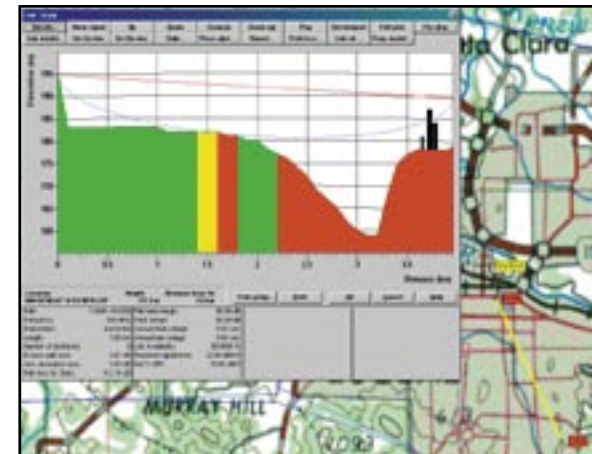
Identify the potential.

Custom Training

EDX offers company-specific training for individuals or groups. This training can be customized for your particular application. We can perform one-on-one or group training at your site or our training facility.

Application Specific

EDX also offers training that can be customized for your particular application. We can teach your engineers about new technologies impacting your business along with ways of utilizing EDX software in designing and optimizing the best system for your needs. This can be done at your site or at our training facility.



Contact

EDX Wireless, LLC
 PO Box 1547
 Eugene, OR 97440-1547
 USA

Tel: +1-541-345-0019
 Fax: +1-541-345-8145
 Email: info@edx.com
 Web: www.edx.com



DoceoTech Industry Training

EDX has teamed with DoceoTech to provide world-class, industry-specific training to our customers.

DoceoTech's WiMAX Forum® RF Network Engineer™ Certification Boot Camp & the Wi-Fi Mesh RF Design Boot Camp prepare technical students to design WiMAX & wireless mesh networks, balancing the requirements of service quality (including throughput and performance) with minimum capital and operations cost. DoceoTech exclusively uses EDX planning tools for the “hands-on” RF design exercises in these courses, giving you the ability to expand your working knowledge of network design using your EDX software.



DoceoTech offers classes in these and other international locations for 2008.

Atlanta, GA	Chicago, IL
San Jose, CA	Dubai, UAE
Leeds, UK	Dallas, TX
Washington, D.C.	Rio de Janeiro, Brazil
Singapore	Amsterdam, NL
London, UK	Athens, Greece
Sao Paulo, Brazil	Shanghai
Raleigh, NC	Berlin, Germany
Milan, Italy	Stockholm, Sweden
Madrid, Spain	Montvale, NJ

See: www.doceotech.com/pubschedule.asp for dates. These courses can be purchased through EDX or directly from DoceoTech, at your preference.

WiMAX

WiMAX Forum RF Network Engineer™ Certification Boot Camp

WiMAX Professional Certification proves that you have the skills to design, install, or operate basic WiMAX networks. Move your career ahead by distinguishing yourself as a WiMAX Forum certified professional.

The emphasis in this four-day course is on the design of the RF access network, including base station engineering and siting, and propagation analysis to serve fixed and mobile subscriber stations.

- Module 1: WiMax Network Design Options
- Module 2: Review of RF Fundamentals
- Module 3: Antennas for WiMAX
- Module 4: RF Design Considerations for WiMAX
- Module 5: Performing a WiMAX Link Budget
- Module 6: WiMAX Path Loss Modeling
- Module 7: Frequency Reuse in Fixed and Mobile WiMAX Networks
- Module 8: WiMAX Performance and Coverage Considerations
- Module 9: WiMAX Coverage and Performance Planning with modeling tools
- Module 10: Capacity Design, and Oversubscription



Wi-Fi Mesh

Wi-Fi Mesh RF Design Boot Camp™

Completion of the Wi-Fi Mesh Expert program proves that you have the skills to design, install, or operate mesh networks. Reduce the time to deploy your mesh network, and move your career ahead, by learning from DoceoTech's experts.

This course is a three-day Boot Camp event, which covers all of the necessary skills to prepare a technical student to design a wireless mesh network. It is targeted at engineers who are planning a municipal, public safety, or campus mesh deployment and is organized into the following six lessons:

- Principles of Wireless Mesh Networks
- Basic RF for Wi-Fi Mesh Design
- Wi-Fi Mesh Network Design
- RF Design Cost Considerations
- Propagation Modeling of Mesh Networks
- Wi-Fi Mesh Design Case Study

The boot camp is structured as 50% tutorial content and 50% hands-on exercises, illustrated with case studies. In addition, six spreadsheet tools are provided to enhance the hands-on experience. Cisco Mesh VARs are required to complete this course as part of an Advanced Technology Program. The course will be launched as Cisco Authorized Training in mid-2008, and will be available through Cisco training partners such as Fast Lane.

Contact

EDX Wireless, LLC
PO Box 1547
Eugene, OR 97440-1547
USA

Tel: +1-541-345-0019
Fax: +1-541-345-8145
Email: info@edx.com
Web: www.edx.com